

# Escape from DiSASEter

Presented by the SASE Interns



Sign-In Form  
[tinyurl.com/ufsasesignin](https://tinyurl.com/ufsasesignin)



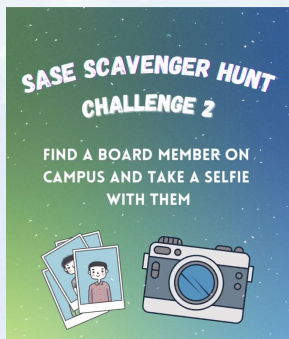
# SASE INTERNS

# Recognizing our SASE Interns!

As this semester comes to a close we'd like to recognize our class of **Fall 2022 SASE Interns!** They've helped plan..

- Mentor-Mentee Challenges
- Social Media Content
- Field Day
- Technical Workshop
- GBM 4

# Social Media Content



## Lead: Michelle Zou

Juliana Sciarrino  
Nicelle Casenas  
Jade Xu  
Aran Gain  
Maanas Kotha  
Helen Ho



# Merchandise (stay tuned..)

## Lead: Catrina Lim

Francesca El Chalfoun	Priya Khatri
Aditya Malhotra	Kaleb Zhai
Janna Rabanal	Jacob Patag
Josephine Tu	Catherine Wu

# Interns Social

## Lead: Amrith Kancharla

Meiqi Li	Sydney Slycord
Harry Tsao	Harshil Pahuja
David Pham	Max Scherer
Mason Enjo	Jack Wu
Akhilesh Makam	



# SASE Field Day

**Lead: Alan Wang**

Jeevanram Munnangi

Andrew Tang

Brenda Nakasone

Kathy Zhai

Anthony Yao

Daniel Park

Leo Lee-Spagnolo

Sophia Dong

Rachel Pu

Vartika Narang



# Technical Workshop

**Leads: Sharika Khondaker, Tam Huynh**

Marcus Scott

Gayatri Baskaran

Yiya Zhou

Anh Hao Dang

Quang Pham

Tan Nguyen

Clarissa Cheung

Webley Woods

Tiffany Vuu

Vincent Tang

Elvin Si

Tyler Berndt

# Programming

Lead: Emely Chhu

Najaree Phromviyo	Aubrey Walters
Aahan Dwivedi	Napat Sammacheep
Rachel Young	Jay Maisuria
Rafael Sunga	Gregory Peiris
Tina Chi	Emily Kim
Brittney Bui	Heather Le

# Alumni Spotlight

Lead: Justin Ryan

Teji Kari  
Albert Yang  
Guankang Yang  
Deagan Kilpatrick

# GBM Committees!



# Icebreaker/Aftersocial

Lead: Bailey Robinson

Kevin Pham	April Le
Komal Keesara	Matthew Jung
Nhi Pham	Brandon Nguyen
Adrita Ali	Mei Adcox
Adam Lim	

# Logistics

Lead: Ian Lai

Brian Blackwood	Andy Tran
Haya Shaikh	Jadon Lee
Bryan Park	Vincent Lin
Aayasha Islam	Jiho Lee
Kausthubh Konuru	Eris Patel
Bhaskar Gnanasakthi	

# Graphics

Lead: Mia Banag

Srividya Donthineni  
Kevin Nguyen  
Raiyan Faeza  
Alison Quach  
Sharon Cho  
Sonia Cheng  
Casie Lin

# GBM Agenda

## 01 Icebreaker

---

Work in groups to communicate a secret message and meet new people!

## 02 Escape!

---

Complete challenges to escape from the DiSASEter!

## 03 Alumni

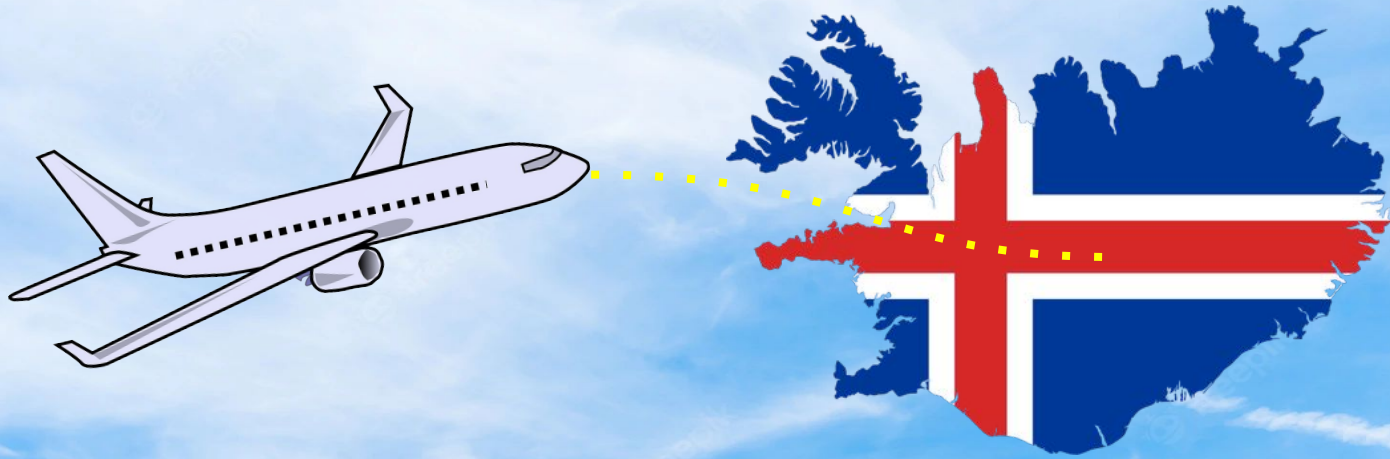
---

Have a chance to ask an in-person SASE CS alumni some questions!

## 04 Aftersocial

---

Head over to Target Copy to get to know your fellow SASE members!



# SASE Winter Getaway!

You and a couple of other SASE members want to celebrate a **successful semester of SASE!** After finals, you all decide to head out to **Reykjavik, Iceland.** There, you all were planning to enjoy the Northern Lights, learn about the rugged Vikings, and jam out to a music festival. However, while on the plane to Reykjavik, your plane starts experiencing **severe turbulence.**



# Time to escape from DiSASER!

## General rules

1. Do **not** collaborate with other groups
2. Do **not** use any electronic devices to assist you (phones, laptops, iPads, calculators, etc.)
3. Interns will be stationed around the room to ensure there is **no cheating**
4. **Early point bonuses** for all challenges applicable
  - a. >1 minute early = 5 points
  - b. >2 minutes early = 10 points
  - c. >3 minutes early = 20 points



# ICEBREAKER



# Oh no!

Your **plane has crashed** in the middle of a blizzard. Luckily before you crashed, someone was in contact with the base and got the **code for a bunker** with the supplies to get you safely out of the blizzard. However, the snow and wind makes it hard for them to reach the entrance of the bunker. Your group should **transmit the code** so the last person can **enter the code** to the entrance.



# Icebreaker

1. Make a **line** from the front to the back of the room
2. The person at the back will **receive an image**
3. Each person in the group will **trace the image** on the back of the person in front of them
4. The person at the front of the line will **draw the image** and give it to us when done



BACK

6

14

20

5

12

13

19

3

4

10

11

17

18

2

8

9

16

1

7

15

A stylized winter landscape illustration. The background features a range of snow-covered mountains in shades of light blue and white. In the foreground, there are several bare, dark trees with intricate branch structures. The sky is a pale blue with scattered white and light blue dots, suggesting falling snow or a starry night sky. The overall aesthetic is clean and artistic.

# FORAGING



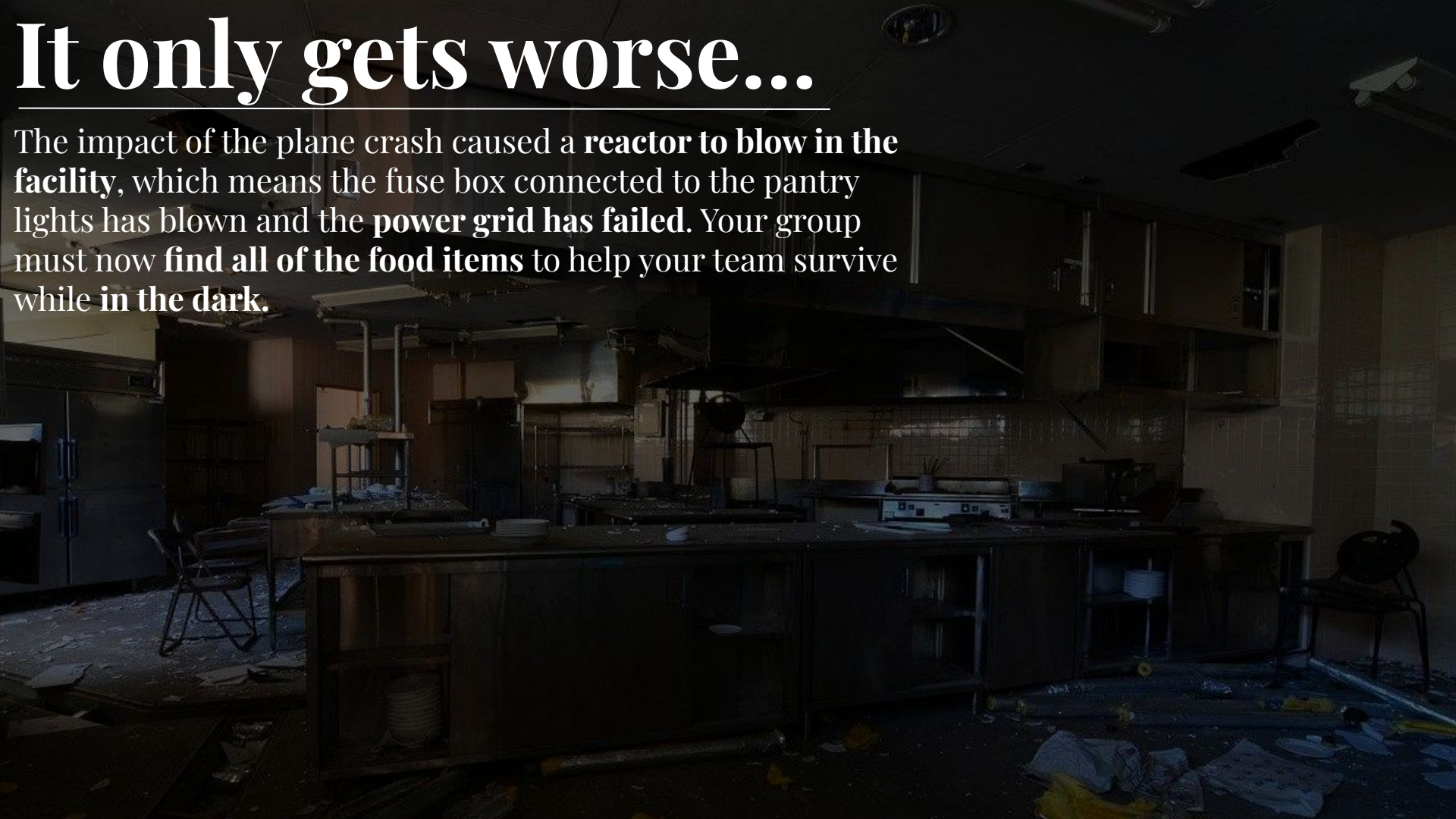
# You made it inside!

---

Congratulations! You successfully transmitted the code and now you have **entered the facility**, safe from the blizzard. But now, for your group to **survive**, you must prepare for the worst, and pick up any **food supplies** left inside...

# It only gets worse...

The impact of the plane crash caused a **reactor to blow in the facility**, which means the fuse box connected to the pantry lights has blown and the **power grid has failed**. Your group must now **find all of the food items** to help your team survive while **in the dark**.







# Foraging Challenge rules

1. **DO NOT OPEN THE ENVELOPE UNTIL TOLD.**
2. The envelope has 3 images.
3. Each image has 25 food items
4. Groups will have 7 minutes to put stickers on the items.
5. The list of food items to find will be provided
6. If your group puts more than 25 items, 1 point will be deducted for each additional item
7. You will receive extra points for finishing early

A dark, abandoned kitchen with stainless steel counters, cabinets, and equipment. In the foreground, a table is set with a variety of food items including a stack of pancakes with fruit, a large burger, french fries, chicken nuggets, and sushi. The scene is dimly lit, with some light coming from a window on the right.

Phew!

After searching around the facility, your group has discovered a **new room**. There is **more food and water** to be found!



4:00

# Foraging Challenge rules

1. You now have 4 images.
2. Each image has 25 food items
3. Groups will have 7 minutes to put stickers on the items.
4. The list of food items to find will be provided
5. If your group puts more than 25 items, 1 point will be deducted for each additional item
6. You will receive extra points for finishing early



# PREDATOR

# What was that noise?!

---

After attempting to gather as much food and water as you can, your group reconvenes within the meeting room. However as you finally start to gather everyone, the sound of **glass breaking** can be heard. A **large predator** has entered the building and is now between you and the exit! Your group must be able to **convey and interpret instructions to each other without the use of words** in order to safely make it out of the meeting room.





# Predator Challenge rules



1. There will be a total of **10 charades**
2. Pairs from 10 teams will volunteer to act out each charade in front of everyone (20 volunteers)
3. The 2 volunteers will automatically receive all points for this challenge
4. Multiple choice answers will be put on the screen, bubble in the one you believe is correct
5. **No talking is permitted... a predator is on the loose!**
6. **5 points** will be taken away for talking

# Charade 1

00:30

A. Cooling a Hot Meal



B. Starting a Fire



C. Warming Hands



D. Sharpening a Knife



# Charade 2

00:30

A. Ice Skating Away



B. Walking Away



C. Shuffling Away



D. Running Away

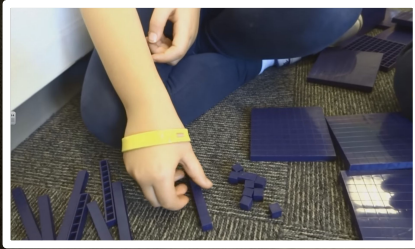




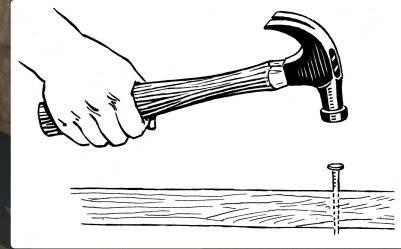
# Charade 3

00:30

A. Moving Blocks



B. Hammering



C. Samurai Slice



D. Chopping wood



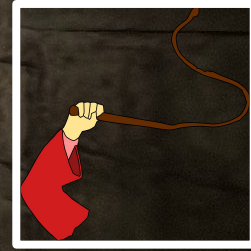
# Charade 4

00:30

A. Making a Rope Knot



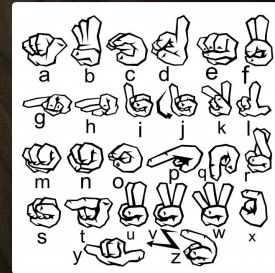
B. Preparing a Whip



C. Ripping Cables



D. Sign Language



# Charade 5

00:30

A. Petting an Animal



B. Cranking a Window



C. Stirring Stew



D. Right Jab



# Charade 6

00:30

Using a...

A. Telescope



B. Magnifying Glass



C. Empty bottle of ketchup



D. Faulty Flashlight



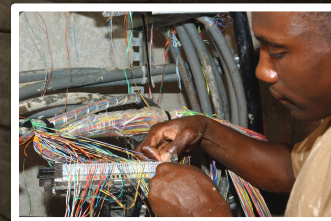
# Charade 7

00:30

A. Starting a Generator



B. Connecting Wires



C. Revving a chainsaw



D. Cranking a lever



# Charade 8

00:30

A. Lighting a Match



B. Mixing chemicals



C. Charging a Defibrillator



D. "Come closer"



# Charade 9

00:30

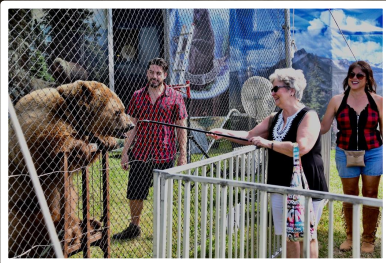
A. Tickling



B. Passcode Lock



C. Poking the bear



D. Jazz Hands



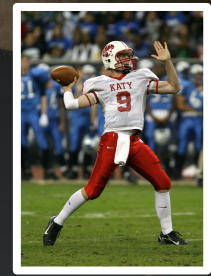
# Charade 10

00:30

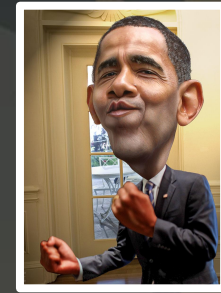
A. Tossing Crumpled Paper



B. Long Passing Football



C. Throwing Snowballs D. Getting Ready to fight





A stylized winter landscape illustration. The background features soft, layered mountains in shades of light blue and white, suggesting snow. In the foreground, there are several bare, dark trees with intricate branch structures. The sky is a pale blue with numerous small, white, circular specks representing falling snow or a misty atmosphere. The overall style is soft and painterly.

**SOS**

# How will we get help?

After narrowly escaping the **horrifying wolf**, you hope that the chemical room will have something that can help you get noticed by any passing aircraft. However, the room is **securely locked**, and you need the password to get in. Luckily, you found the lead researcher's diary, and it has the password! Unfortunately, it seems to be **cipered**. He did leave a **riddle** and an **ASCII table** behind though, so maybe that offers a hint...



# SOS Challenge rules

1. There are **2 codes** to crack, each containing **half of the password** to the storeroom.
2. Solve the riddle to receive the **key to the cipher**.
3. Once you have the password, **raise your hand** to get it checked.
4. If your password is correct, you will receive a handout with the information to send an **SOS**.
5. Once you know how to send the signal, **place all your materials back in the envelope and raise your hand** to get it checked.
6. You will receive **extra points** for finishing early.



A stylized winter landscape illustration. The background features soft, layered mountains in shades of light blue and white, suggesting snow. In the foreground, there are several bare, dark trees with intricate branch structures. The sky is a pale blue, filled with numerous small, white, circular particles representing falling snow or snowflakes. The overall aesthetic is clean and artistic, with a cool color palette.

**ALUMNI**

# As we await rescue...

---

While your group waits for a helicopter or plane to spot your explosion, one of the **older members** of the group steps up to **tell some stories** and distract everyone from their current predicament.



# Alumni Spotlight: Melinda Chhu



amazon

Major: Computer Science

Minor: Communication Studies

Graduation Year: Spring 2022

SASE Involvement: SASE Intern (ENG Committee), South Regional Conference Head Chair, Pika-Chhus' Mentor

Current Job & Position: Amazon (AWS) Software Engineer





**КАНОТ**

# The Survivors Return...

---

**Congratulations**, you have **survived** the harsh arctic winter! Coated in a warm blanket and riding the helicopter on the way back to safety, the **rescue team** has a **few questions** for your group...







**Kahoot!**

# Winners!



# Winners!

## Team 15



A red helicopter is parked on a dark asphalt helipad. The helipad has yellow circular markings. In the background, there are snow-capped mountains and dense evergreen forests. The sky is overcast.

# The Aftermath

You and your group have **finally** made it home! Before you leave though, your rescuers have a few suggestions for ways to **raise your spirits** and devour a **scrumptious meal** after the long day you've had.



# Internal Plugs

# SASE Fall 2022 Merchandise

---



**2022  
SASE  
MERCH**

**SASE**  
SOCIETY OF ASIAN SCIENTISTS & ENGINEERS

**PRE-ORDER FORM  
OPEN NOW!**

The advertisement features a dark blue background with a white and green dragon design on a t-shirt. To the right, a dark blue hoodie and t-shirt are displayed. The SASE logo is visible in the top right corner of the ad.



<https://tinyurl.com/ufsasef22merch>

# SASE Winter Banquet

---



[tinyurl.com/UFSASEWBQ22](https://tinyurl.com/UFSASEWBQ22)

# SASE Evening with Professors

---

Evening With The  
**PROFESSORS**

Time: 7:00-8:30 PM  
Date: Monday, Dec. 5  
Location: Liquid Ginger

(101 SE 2nd Pl, Gainesville,  
FL 32601)



Enjoy a meal and have a chat with a professor!



[tinyurl.com/ufsaseewp](https://tinyurl.com/ufsaseewp)





# External Plugs



# Society of Taiwanese and Hong Kong Students

- Coming soon in spring semester
- Learn about the unique cultures of Taiwan and Hong Kong
- Submit the interest form to join our Discord! We're excited to meet you :)

Interest form:





Studio FLP:  
A Spirited Banquet

LOCATION: PUGH HALL OCORA  
DOORS OPEN: 6:30P.M.

DATE: DECEMBER 7TH, 2022  
EVENT STARTS: 7:00P.M.



PERFORMER  
APPLICATIONS OPEN

DEADLINE: DECEMBER 4 11:59 PM	FOR STUDIO FLP: A SPIRITED BANQUET
-------------------------------------	---------------------------------------





# Tōji 冬至

Winter Banquet



12.9.2022  
Doors Open 6PM  
Matthew's Suite in Reitz  
RSVP in Linktree



UFFSA PRESENTS

# Fifth Fall Show Helliday's Kitchen

**December 2nd, 2022**

**Location: LIT0101**

**Doors Open: 5:45 PM**

**Show Starts: 6 PM**



# Aftersocial

---

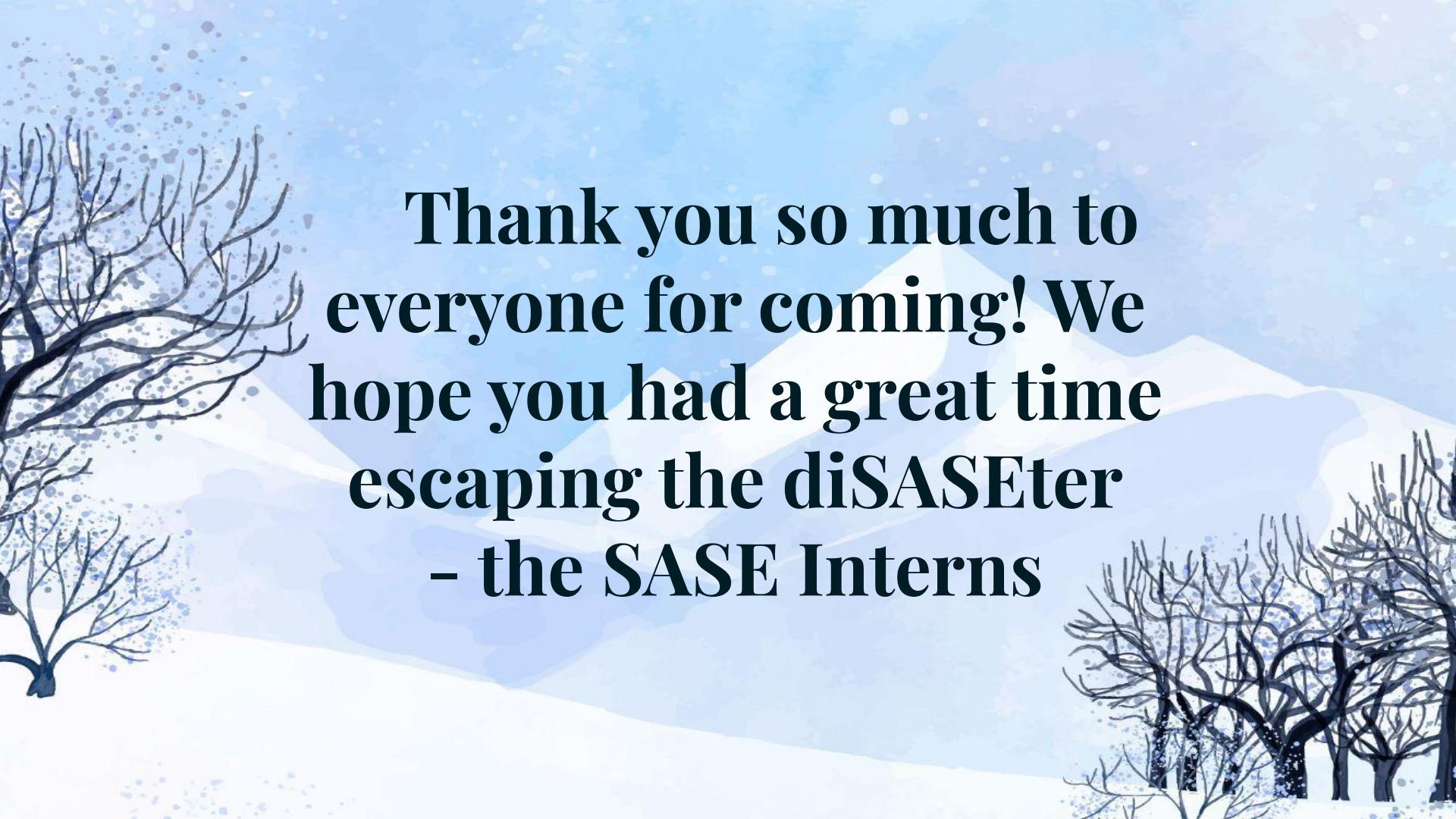
## Location:

Target Copy, near Chipotle  
on University Ave

## 3 Options:

- Sushi-2-Go
- Bite of Power
- Chipotle





**Thank you so much to  
everyone for coming! We  
hope you had a great time  
escaping the diSASEter  
- the SASE Interns**