

Navigating the Workplace

as a Young Asian
American Professional

Sign-In! →



Schedule

01

First Week

02

Building
Relationships

03

Alumni

04

Panel Q&A

05

Activity

01

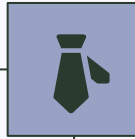
First Week



Preparing for your “First Day”

Dress for Success

First impressions can leave a lasting impact. Better to be overdressed than underdressed!



Arriving Early

Navigating a new campus/office can be tricky. Arrive around 15-30 minutes early.

Ask Questions

Don't be afraid to ask questions! More people than you think are willing to help.

Introductions

Bring a positive attitude! There will be a lot of meeting new faces.

Onboarding Processes



Learn about the company's mission and values



Technical Training



Setting goals for yourself



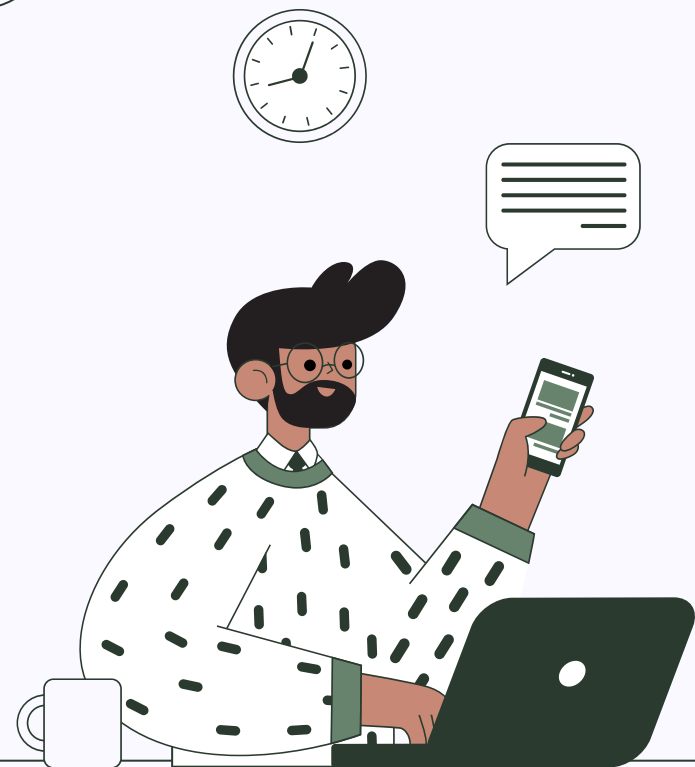
02

Building Relationships



Mentorship

1. Paired with an experienced employee
2. Give help and guidance
3. Be a your buddy during this transition!



Networking



Grab Coffee or Lunch

Be a sponge and absorb! Great way to break the ice with your coworkers

“Open-Door Policy”

Don't be afraid to ask questions!



Cross-Functional Teams

Collaborate with colleagues from different disciplines/departments

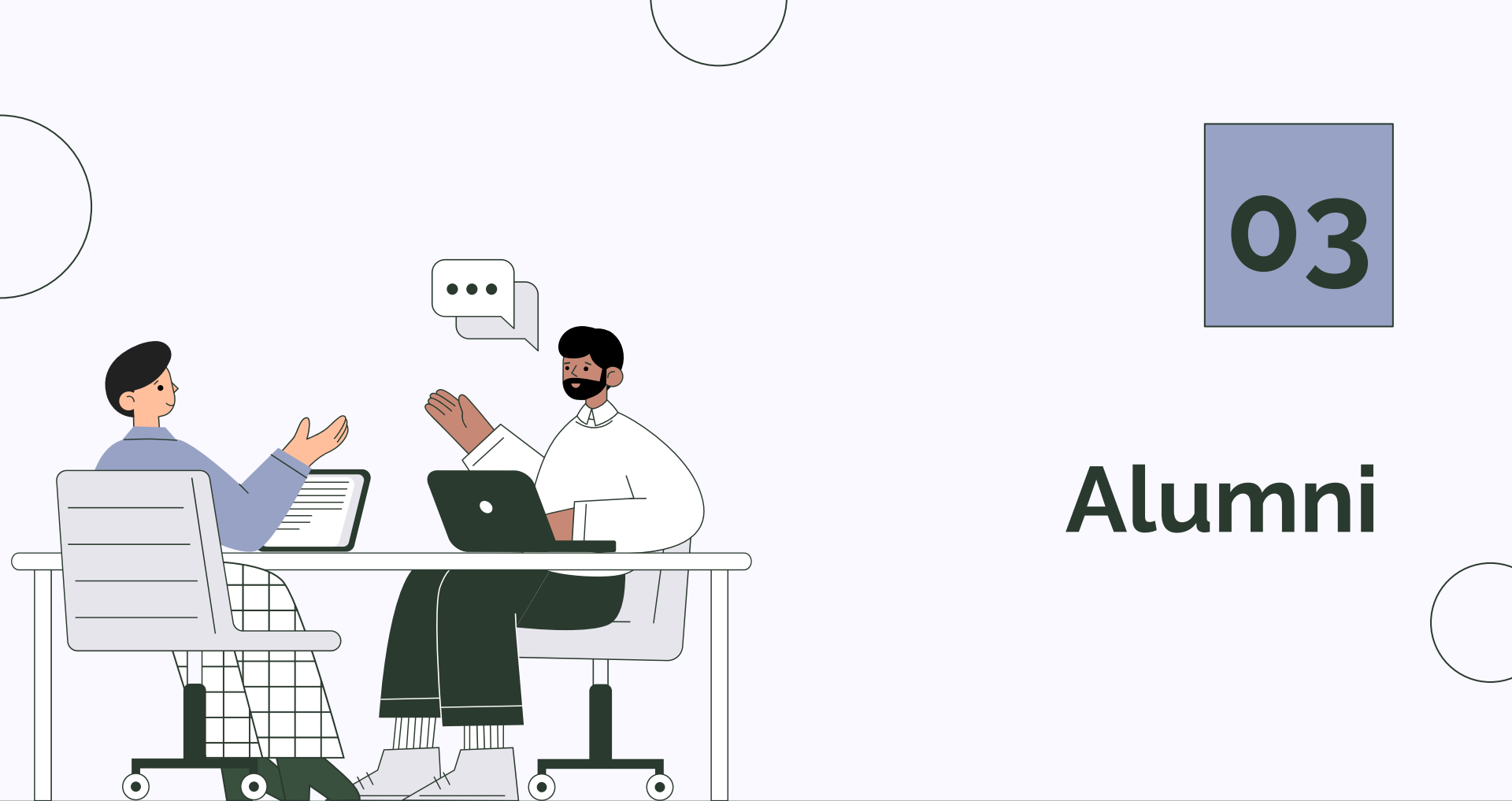
Employee Resource Groups (ERGs)

Bring together individuals with shared interests or backgrounds



03

Alumni



Jesse Siu

Degree: ISE (Spr '21)

Location: Atlanta, GA

Company: NielsenIQ (NIQ)

Role: Associate Client Manager

Past Experience:

Integration Consultant

@ UKG

Data Analyst @ Aaron's



[LinkedIn Profile](#)



Hobbies/Interests:

- Baking
- Caffeine
- Walking
- Travel planning
- Mahjong

Career Interests:

- CPG
- Beverages
- Beauty

Lessons learned so far:

- Weekly Manager 1:1's
- Goal setting and project documentation
- Seek mentors, stay connected with your new hire cohort
- Be curious and ask questions
- Understand your industry
- Communication across generations and cultures
- Celebrate others

NIQ Employee Resources

<p>ADEPT</p> <p>Abled & Disabled Employees Partnering Together</p>	<p>ALL-IN</p> <p>Asian Learning, Leadership and Innovation at NIQ</p>	<p>HOLA</p> <p>Hispanic Organization of Leaders in Action</p>
<p>MOSAIC</p> <p>Multinational Organization Supporting an Inclusive Culture</p>	<p>N-GEN</p> <p>NIQ Generation</p>	<p>PRIDE</p> <p>LGBT+ and Allies</p>
<p>SABLE</p> <p>Sustaining Active Black Leadership and Empowerment</p>	<p>SERV</p> <p>Support and Employee Resources for Veterans</p>	<p>WIN</p> <p>Women In NIQ</p>

Key Events:

- ❖ Lunar New Year Celebration
- ❖ Diwali
- ❖ Affinity Month
 - “Tea Time” with Asian corporate leaders
 - Mental health awareness event
 - AAPI key figure spotlight posts
 - Virtual 5k fundraiser

ALL-IN

Asian Learning, Leadership, Innovation & Networking



Nielsen IQ University

Other resources

- ❖ Company sharepoint and team sharepoint
- ❖ Mentorship assigned on day 1 of hire
- ❖ Training pathways within first 6 months of hire
 - Learning about NIQ solutions
- ❖ Office hours

Ploypailin Ellifritt

Job Title:

- Supply Chain Leader (SCL) FritoLay

SASE Involvement!

.SASE Intern: Spring '21
.Historian: Fall '21 – Spring '22
.AASA Choreographer: Fall '22
.Senior Advisor: Fall 22' – Spring '23



Education:

- University of Florida
- Chemical Engineering



What PepsiCo Offer!!

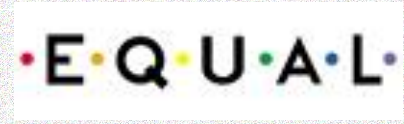
Employee Resource Groups



PEPSICO



Tropicana



What PepsiCo Offer!!

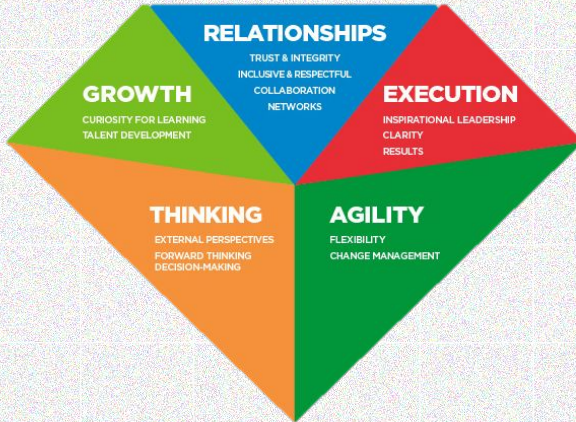
***Career Development:
My P&D Profile
ACE Conversations
Leadership Gold
Onboarding Program***



PEPSICO



Tropicana



***Personal Experience:
Facilitation Conversations
This is NOT an Engineering/STEM Role
People Skills!!
Adjusting to industry after school***



Andrew Cheung

Grooming – Senior Blades & Metals Engineer

Cheung.a@pg.com

Birthplace: Hollywood, Florida

Business Use

Education:

University of Florida

B.S, Aerospace Engineering

B.S, Mechanical Engineering

Minor, Electrical Engineering

of years with P&G: 7

Hobbies/Interests:

Climbing

Photography (@andrewcphotos)

Coffee (@andrewccoffee)

Baking

Hiking

Watches



Work Experience

- Procter and Gamble Grooming, Boston WSHQ '20-Present
Senior Blades & Metals Engineer
- Procter and Gamble Beauty Care, SWIC/Mason '17-'20
Filler Capper GTO/Tabler Station Start Up Engineer
- Procter and Gamble Iowa City Beauty Care, IA Plant '16-'17
Delivery Engineer
- SpaceX, Hawthorne, CA '15
Avionics Build Intern
- General Electric Aviation Peebles, OH '14-
Wind Tunnel Test Engineer Intern
- General Electric Aviation Lynn, MA '13
Aeromechanics Intern
- University of Florida Formula SAE '12-'16
Powertrain Lead/President/Treasurer/Machinist



04

Panel Q&A



Alumni Panel Q&A



Jesse Siu

Assistant Client Manager at
Nielsen IQ



Ploy Ellifrit

Supply Chain Leader at
Frito-Lay (PepsiCo)



Andrew Cheung

Senior Manager Blades and
Metals Group at Procter &
Gamble

05

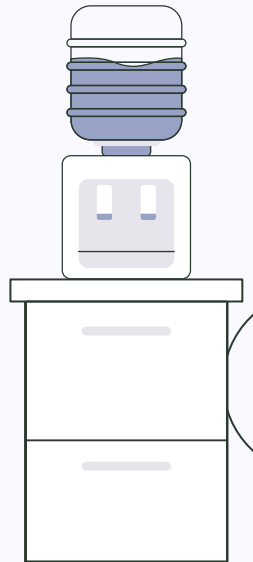
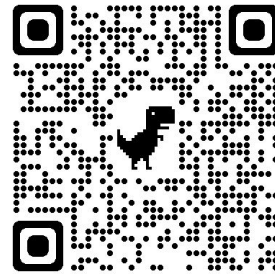
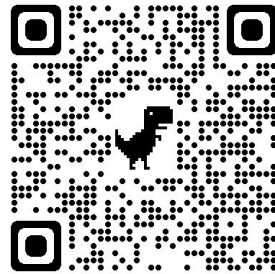
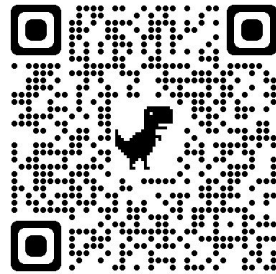
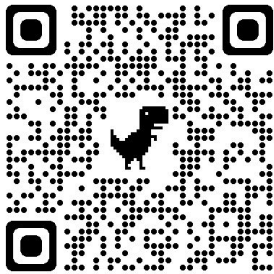
Activity



Workplace Wordle

- In your assigned breakout room, you will work together to complete these four wordles!
- Scan the QR, solve it, and come back to the main room once completed
- Direct message me in the chat (NOT everyone) with your answers!

First team to complete all four will receive a prize!



Thank You!

Sign-In →

